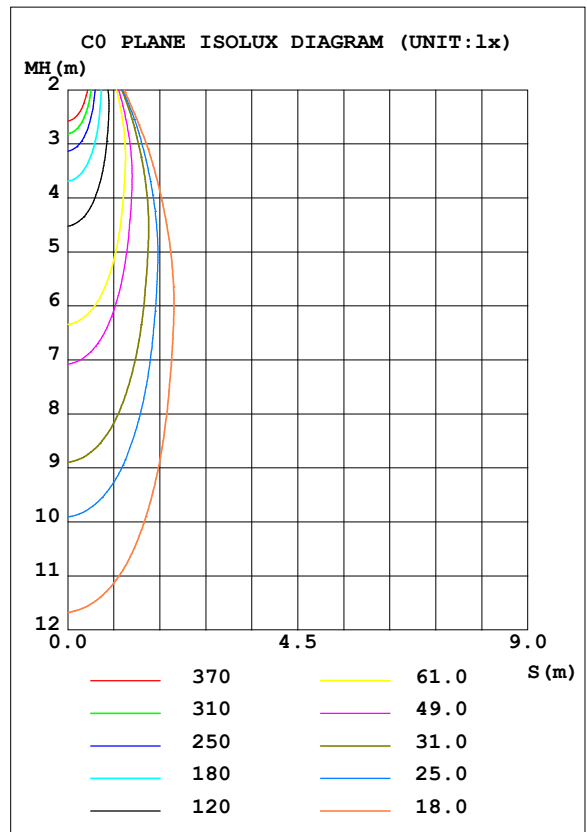
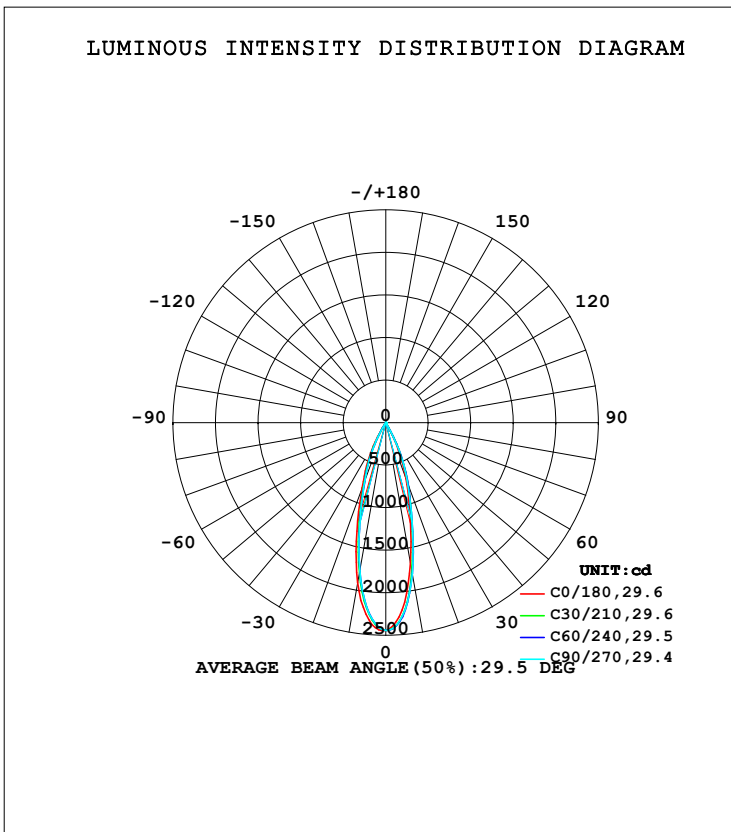


LUMINAIRE PHOTOMETRIC TEST REPORT

Test:U:219.85V I:0.0951A P:12.765W PF:0.6105 Freq:49.99Hz Lamp Flux:739.031x1 lm		
NAME:	TYPE:	WEIGHT:
SPEC.:	DIM.:	SERIAL No.:
MFR.: EVERFINE	SUR.:	Shielding Angle:

DATA OF LAMP		PHOTOMETRIC DATA Eff: 57.89 lm/W			
MODEL		I _{max} (cd)	2450	S/MH (C0/180)	0.53
NOMINAL POWER (W)		LOR (%)	100.0	S/MH (C90/270)	0.49
RATED VOLTAGE (V)	220	TOTAL FLUX (lm)	739.03	η UP, DN (C0-180)	0.0, 47.4
NOMINAL FLUX (lm)	739.031	CIE CLASS	DIRECT	η UP, DN (C180-360)	0.0, 52.6
LAMPS INSIDE	1	η up (%)	0.0	CIBSE SHR NOM	0.50
TEST VOLTAGE (V)	220	η down (%)	100.0	CIBSE SHR MAX	0.55



C Range: 0 - 360DEG
 C Interval: 30.0DEG
 Test Speed: HIGH
 Temperature: 25.3DEG
 Operators: GS
 Test Date: 2025-07-19

γ Range: 0 - 90DEG
 γ Interval: 1.0DEG
 Test System: EVERFINE GO-2000B_V1 SYSTEM V2.00.417
 Humidity: 65.0%
 Test Distance: 5.600m [K=1.0000]
 Remarks:

ZONAL FLUX DIAGRAM

ZONAL FLUX DIAGRAM:

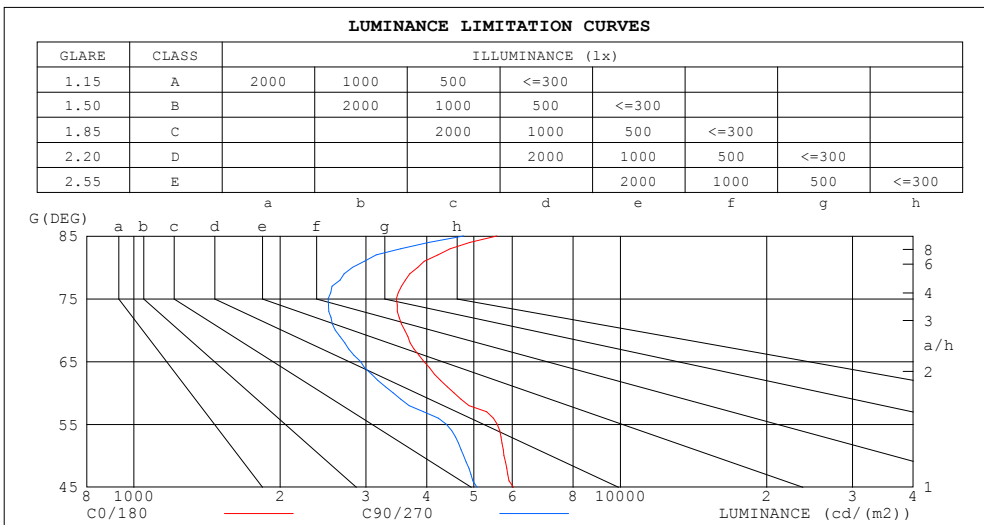
γ	C0	C45	C90	C135	C180	C225	C270	C315	γ	Φ zone	Φ total	%lum, lamp
10	1673	1786	1799	1705	1912	1780	1765	1877	0- 10	200.9	200.9	27.2,27.2
20	699.1	773.5	756.9	692.1	817.0	734.5	721.5	801.1	10- 20	330.2	531.1	71.9,71.9
30	61.11	68.69	63.81	53.52	198.6	164.1	148.1	179.4	20- 30	186.6	717.7	97.1,97.1
40	3.763	3.369	3.297	3.465	4.634	4.550	4.581	4.542	30- 40	14.17	731.9	99,99
50	2.604	2.291	2.161	2.382	2.944	3.227	3.316	3.120	40- 50	2.503	734.4	99.4,99.4
60	1.598	1.331	1.203	1.369	2.153	2.466	2.574	2.377	50- 60	2.112	736.5	99.7,99.7
70	0.8666	0.7123	0.6264	0.7283	1.063	1.271	1.342	1.202	60- 70	1.354	737.9	99.8,99.8
80	0.4677	0.3911	0.3450	0.3970	0.5246	0.6326	0.6741	0.5913	70- 80	0.7565	738.6	99.9,99.9
90	0.3134	0.3006	0.2871	0.3033	0.2364	0.2539	0.2788	0.2530	80- 90	0.3993	739.0	100,100
100									90-100			
110									100-110			
120									110-120			
130									120-130			
140									130-140			
150									140-150			
160									150-160			
170									160-170			
180									170-180			
DEG	LUMINOUS INTENSITY:cd									UNIT:lm		

C Range: 0 - 360DEG
 C Interval: 30.0DEG
 Test Speed: HIGH
 Temperature:25.3DEG
 Operators:GS
 Test Date:2025-07-19

γ Range: 0 - 90DEG
 γ Interval: 1.0DEG
 Test System:EVERFINE GO-2000B_V1 SYSTEM V2.00.417
 Humidity:65.0%
 Test Distance:5.600m [K=1.0000]
 Remarks:

LUMINANCE LIMITATION CURVES

Test:U:219.85V I:0.0951A P:12.765W PF:0.6105 Freq:49.99Hz Lamp Flux:739.031x1 lm		
NAME:	TYPE:	WEIGHT:
SPEC.:	DIM.:	SERIAL No.:
MFR.: EVERFINE	SUR.:	Shielding Angle:



LUMINANCE cd/(m2)		
G (DEG)	C0/180	C90/270
85	5572	4760
80	3834	2816
75	3466	2509
70	3607	2596
65	3948	2925
60	4551	3411
55	5584	4392
50	5768	4766
45	6037	5074

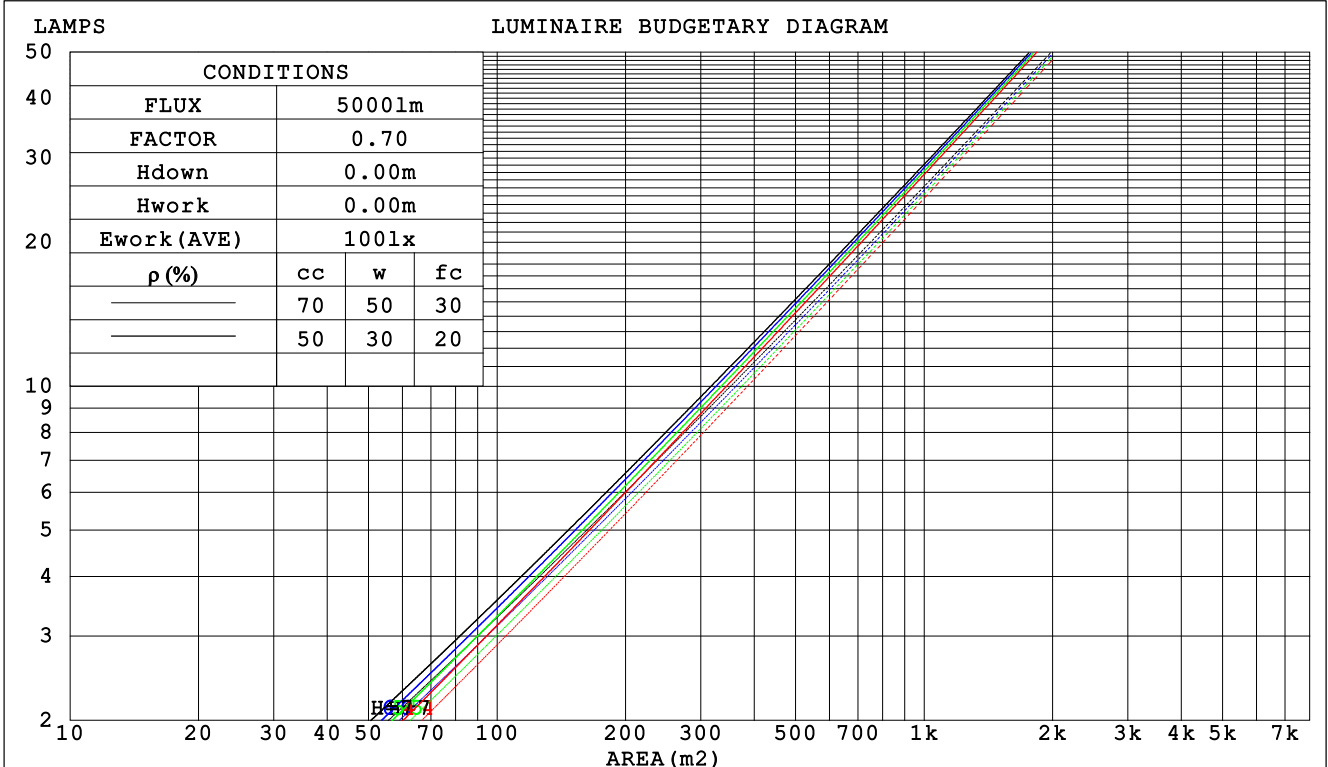
C Range: 0 - 360DEG
 C Interval: 30.0DEG
 Test Speed: HIGH
 Temperature:25.3DEG
 Operators:GS
 Test Date:2025-07-19

γ Range: 0 - 90DEG
 γ Interval: 1.0DEG
 Test System:EVERFINE GO-2000B_V1 SYSTEM V2.00.417
 Humidity:65.0%
 Test Distance:5.600m [K=1.0000]
 Remarks:

CU AND LUMINAIRE BUDGETARY ESTIMATE DIAGRAM

Test:U:219.85V I:0.0951A P:12.765W PF:0.6105 Freq:49.99Hz Lamp Flux:739.031x1 lm		
NAME:	TYPE:	WEIGHT:
SPEC.:	DIM.:	SERIAL No.:
MFR.: EVERFINE	SUR.:	Shielding Angle:

ρ_{cc}	80%			70%			50%			30%			10%			0
ρ_w	50%	30%	10%	50%	30%	10%	50%	30%	10%	50%	30%	10%	50%	30%	10%	0
ρ_{fc}	20%			20%			20%			20%			20%			0
RCR	RCR:Room Cavity Ratio						Coefficients of Utilization(CU)									
0.0	1.19	1.19	1.19	1.16	1.16	1.16	1.11	1.11	1.11	1.06	1.06	1.06	1.02	1.02	1.02	1.00
1.0	1.13	1.11	1.09	1.10	1.09	1.07	1.06	1.05	1.04	1.03	1.02	1.01	.99	.99	.98	.96
2.0	1.07	1.04	1.01	1.05	1.02	.99	1.02	.99	.98	.99	.97	.96	.97	.95	.94	.92
3.0	1.02	.98	.95	1.01	.97	.94	.98	.95	.93	.96	.93	.91	.94	.92	.90	.89
4.0	.98	.93	.90	.97	.93	.90	.95	.91	.89	.93	.90	.88	.91	.89	.87	.85
5.0	.94	.89	.86	.93	.89	.86	.91	.88	.85	.90	.87	.84	.88	.86	.84	.82
6.0	.90	.86	.82	.89	.85	.82	.88	.84	.82	.87	.84	.81	.86	.83	.81	.79
7.0	.87	.82	.79	.86	.82	.79	.85	.81	.79	.84	.81	.78	.83	.80	.78	.77
8.0	.84	.79	.76	.83	.79	.76	.82	.78	.76	.81	.78	.75	.80	.77	.75	.74
9.0	.81	.76	.74	.80	.76	.73	.80	.76	.73	.79	.75	.73	.78	.75	.73	.72
10.0	.78	.74	.71	.78	.74	.71	.77	.73	.71	.76	.73	.71	.76	.73	.70	.69



C Range: 0 - 360DEG
 C Interval: 30.0DEG
 Test Speed: HIGH
 Temperature:25.3DEG
 Operators:GS
 Test Date:2025-07-19

γ Range: 0 - 90DEG
 γ Interval: 1.0DEG
 Test System:EVERFINE GO-2000B_V1 SYSTEM V2.00.417
 Humidity:65.0%
 Test Distance:5.600m [K=1.0000]
 Remarks:

WEC AND CCEC

Test:U:219.85V I:0.0951A P:12.765W PF:0.6105 Freq:49.99Hz Lamp Flux:739.031x1 lm		
NAME:	TYPE:	WEIGHT:
SPEC.:	DIM.:	SERIAL No.:
MFR.: EVERFINE	SUR.:	Shielding Angle:

ρ _{cc}	80%			70%			50%			30%			10%			0
ρ _w	50%	30%	10%	50%	30%	10%	50%	30%	10%	50%	30%	10%	50%	30%	10%	0
ρ _{fc}	20%			20%			20%			20%			20%			0
RCR	RCR:Room Cavity Ratio						Wall Exitance Coefficients (WEC)									
0.0																
1.0	.144	.082	.026	.137	.078	.025	.125	.072	.023	.113	.065	.021	.103	.060	.019	
2.0	.134	.073	.022	.128	.071	.022	.118	.066	.020	.109	.061	.019	.100	.056	.018	
3.0	.125	.067	.020	.121	.065	.019	.112	.061	.018	.104	.057	.017	.097	.053	.017	
4.0	.118	.061	.018	.114	.060	.018	.107	.056	.017	.100	.054	.016	.093	.051	.015	
5.0	.111	.057	.016	.108	.055	.016	.102	.053	.016	.096	.051	.015	.090	.048	.015	
6.0	.106	.053	.015	.103	.052	.015	.097	.050	.015	.092	.048	.014	.088	.046	.014	
7.0	.101	.050	.014	.098	.049	.014	.093	.047	.014	.089	.046	.013	.085	.044	.013	
8.0	.096	.047	.013	.094	.046	.013	.090	.045	.013	.086	.044	.013	.082	.042	.012	
9.0	.092	.045	.012	.090	.044	.012	.087	.043	.012	.083	.042	.012	.080	.041	.012	
10.0	.089	.042	.012	.087	.042	.012	.084	.041	.012	.080	.040	.011	.077	.039	.011	

ρ _{cc}	80%			70%			50%			30%			10%			0
ρ _w	50%	30%	10%	50%	30%	10%	50%	30%	10%	50%	30%	10%	50%	30%	10%	0
ρ _{fc}	20%			20%			20%			20%			20%			0
RCR	RCR:Room Cavity Ratio						Ceiling Cavity Exitance Coefficients (CCEC)									
0.0	.190	.190	.190	.163	.163	.163	.111	.111	.111	.064	.064	.064	.020	.020	.020	
1.0	.169	.158	.147	.144	.135	.127	.099	.093	.088	.057	.054	.051	.018	.017	.017	
2.0	.151	.133	.117	.129	.114	.101	.089	.079	.071	.051	.046	.041	.016	.015	.013	
3.0	.137	.113	.095	.117	.098	.082	.080	.068	.058	.046	.040	.034	.015	.013	.011	
4.0	.124	.098	.078	.107	.085	.068	.073	.059	.048	.042	.035	.028	.014	.011	.009	
5.0	.114	.086	.065	.098	.074	.056	.068	.052	.040	.039	.030	.024	.013	.010	.008	
6.0	.106	.076	.055	.091	.066	.048	.063	.046	.034	.036	.027	.020	.012	.009	.007	
7.0	.098	.068	.047	.085	.059	.041	.058	.041	.029	.034	.024	.017	.011	.008	.006	
8.0	.092	.061	.040	.079	.053	.035	.055	.037	.025	.032	.022	.015	.010	.007	.005	
9.0	.087	.056	.035	.075	.048	.030	.052	.034	.022	.030	.020	.013	.010	.007	.004	
10.0	.082	.051	.031	.071	.044	.027	.049	.031	.019	.029	.018	.011	.009	.006	.004	

C Range: 0 - 360DEG
 C Interval: 30.0DEG
 Test Speed: HIGH
 Temperature:25.3DEG
 Operators:GS
 Test Date:2025-07-19

γ Range: 0 - 90DEG
 γ Interval: 1.0DEG
 Test System:EVERFINE GO-2000B_V1 SYSTEM V2.00.417
 Humidity:65.0%
 Test Distance:5.600m [K=1.0000]
 Remarks:

UGR(Unified Glare Rating) Table

Test:U:219.85V I:0.0951A P:12.765W PF:0.6105 Freq:49.99Hz Lamp Flux:739.031x1 lm										
NAME:			TYPE:			WEIGHT:				
SPEC.:			DIM.:			SERIAL No.:				
MFR.: EVERFINE			SUR.:			Shielding Angle:				
ceiling/cavity	0.7	0.7	0.5	0.5	0.3	0.7	0.7	0.5	0.5	0.3
walls	0.5	0.3	0.5	0.3	0.3	0.5	0.3	0.5	0.3	0.3
working plane	0.2	0.2	0.2	0.2	0.2	0.2	0.2	0.2	0.2	0.2
Room dimensions	Viewed crosswise					Viewed endwise				
x = 2H y = 2H	5.6	6.3	5.8	6.5	6.6	4.9	5.6	5.1	5.8	5.9
3H	6.5	7.1	6.7	7.3	7.5	5.6	6.2	5.8	6.4	6.6
4H	6.9	7.5	7.2	7.7	7.9	5.9	6.5	6.2	6.7	6.9
6H	7.3	7.9	7.6	8.2	8.4	6.2	6.8	6.5	7.1	7.3
8H	7.6	8.1	7.9	8.4	8.6	6.4	7.0	6.7	7.2	7.5
12H	7.9	8.4	8.2	8.7	8.9	6.7	7.3	7.0	7.5	7.8
4H 2H	5.9	6.5	6.1	6.7	6.9	5.3	5.9	5.5	6.1	6.3
3H	6.9	7.4	7.2	7.7	8.0	6.1	6.7	6.4	6.9	7.2
4H	7.4	7.9	7.8	8.2	8.5	6.6	7.1	6.9	7.3	7.6
6H	8.0	8.5	8.4	8.8	9.1	7.1	7.5	7.4	7.8	8.2
8H	8.3	8.8	8.7	9.1	9.5	7.3	7.7	7.7	8.1	8.5
12H	8.7	9.1	9.1	9.5	9.9	7.7	8.1	8.1	8.5	8.9
8H 4H	7.6	8.0	7.9	8.3	8.7	6.8	7.2	7.1	7.5	7.9
6H	8.3	8.6	8.7	9.0	9.4	7.4	7.8	7.9	8.2	8.6
8H	8.7	9.0	9.2	9.5	9.9	7.9	8.2	8.3	8.6	9.0
12H	9.3	9.6	9.8	10.0	10.5	8.5	8.7	8.9	9.1	9.6
12H 4H	7.6	7.9	8.0	8.3	8.7	6.8	7.2	7.2	7.5	7.9
6H	8.3	8.6	8.8	9.1	9.5	7.5	7.8	8.0	8.2	8.7
8H	8.8	9.1	9.3	9.5	10.0	8.0	8.3	8.5	8.7	9.2
Variations with the observer position at spacings:										
S = 1.0H	+ 0.2 / - 0.2					+ 0.3 / - 0.4				
1.5H	+ 0.2 / - 0.4					+ 0.2 / - 0.3				
2.0H	+ 0.5 / - 0.5					+ 0.5 / - 0.5				

CIE Pub.117, 739.0 lm Total Lamp Luminous Flux Correct (8log(F/F0) = -1.1)
 Area: 0.0007065 m2

C Range: 0 - 360DEG
 C Interval: 30.0DEG
 Test Speed: HIGH
 Temperature:25.3DEG
 Operators:GS
 Test Date:2025-07-19

γ Range: 0 - 90DEG
 γ Interval: 1.0DEG
 Test System:EVERFINE GO-2000B_V1 SYSTEM V2.00.417
 Humidity:65.0%
 Test Distance:5.600m [K=1.0000]
 Remarks:

UTILIZATION FACTORS TABLE

Test:U:219.85V I:0.0951A P:12.765W PF:0.6105 Freq:49.99Hz Lamp Flux:739.031x1 lm		
NAME:	TYPE:	WEIGHT:
SPEC.:	DIM.:	SERIAL No.:
MFR.: EVERFINE	SUR.:	Shielding Angle:

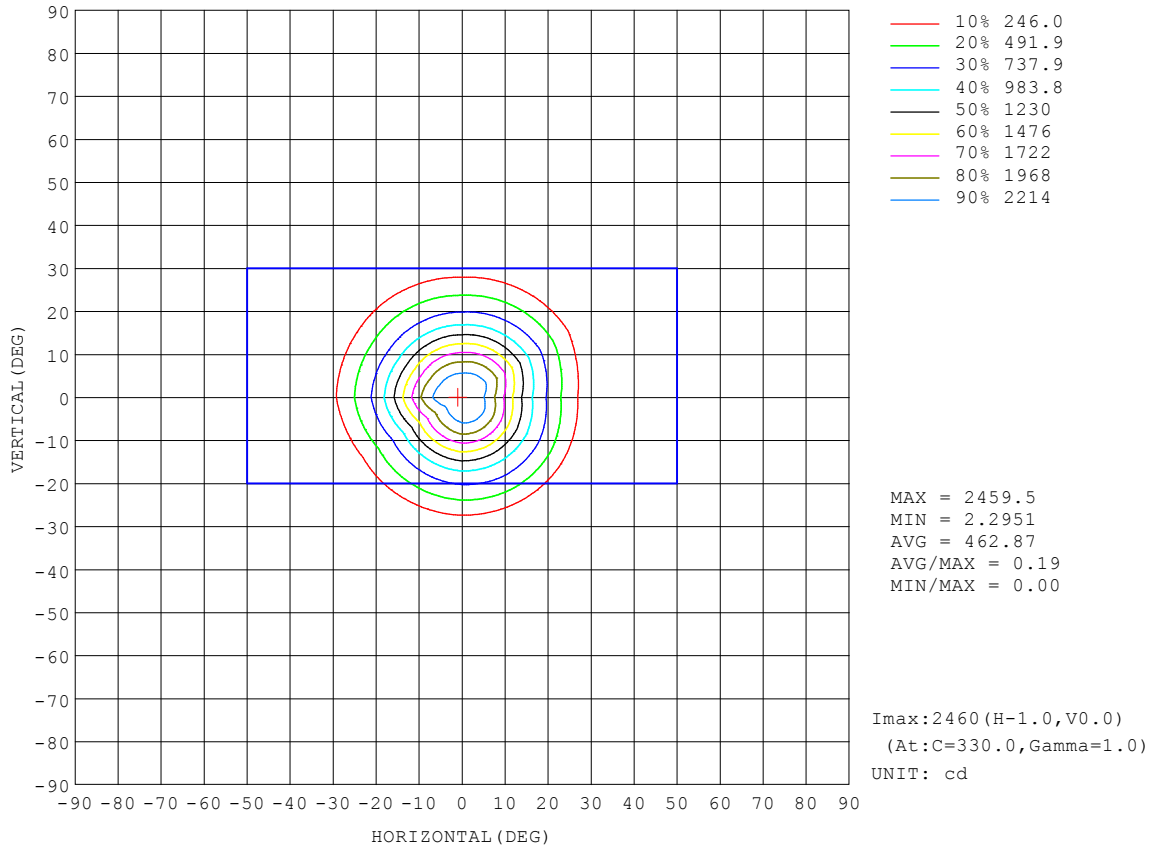
REFLECTANCE										
Ceiling	0.8	0.8	0.8	0.7	0.7	0.7	0.5	0.5	0.5	0
Walls	0.7	0.5	0.3	0.7	0.5	0.3	0.7	0.5	0.3	0
Working plane	0.2	0.2	0.2	0.2	0.2	0.2	0.2	0.2	0.2	0
ROOM INDEX	UTILIZATION FACTORS (PERCENT) $k(RI) \times RCR = 5$									
k = 0.60	91	85	82	91	85	82	90	85	82	78
0.80	98	93	89	97	92	89	96	92	89	86
1.00	102	97	93	101	96	93	99	96	93	89
1.25	105	101	97	104	100	97	102	99	96	92
1.50	108	103	100	106	103	100	104	101	99	95
2.00	110	106	103	108	105	102	106	103	101	96
2.50	111	108	105	110	107	104	107	104	102	97
3.00	113	110	107	111	108	106	108	105	104	98
4.00	114	112	110	112	110	109	109	107	106	99
5.00	116	114	112	114	112	110	110	108	107	100
ROOM INDEX	UF(total)									Direct
According to DIN EN 13032-2 2004			Suspended				SHRNOM = 1.25			

C Range: 0 - 360DEG
 C Interval: 30.0DEG
 Test Speed: HIGH
 Temperature:25.3DEG
 Operators:GS
 Test Date:2025-07-19

γ Range: 0 - 90DEG
 γ Interval: 1.0DEG
 Test System:EVERFINE GO-2000B_V1 SYSTEM V2.00.417
 Humidity:65.0%
 Test Distance:5.600m [K=1.0000]
 Remarks:

ISOCANDELA DIAGRAM

Test:U:219.85V I:0.0951A P:12.765W PF:0.6105 Freq:49.99Hz Lamp Flux:739.031x1 lm		
NAME:	TYPE:	WEIGHT:
SPEC.:	DIM.:	SERIAL No.:
MFR.: EVERFINE	SUR.:	Shielding Angle:

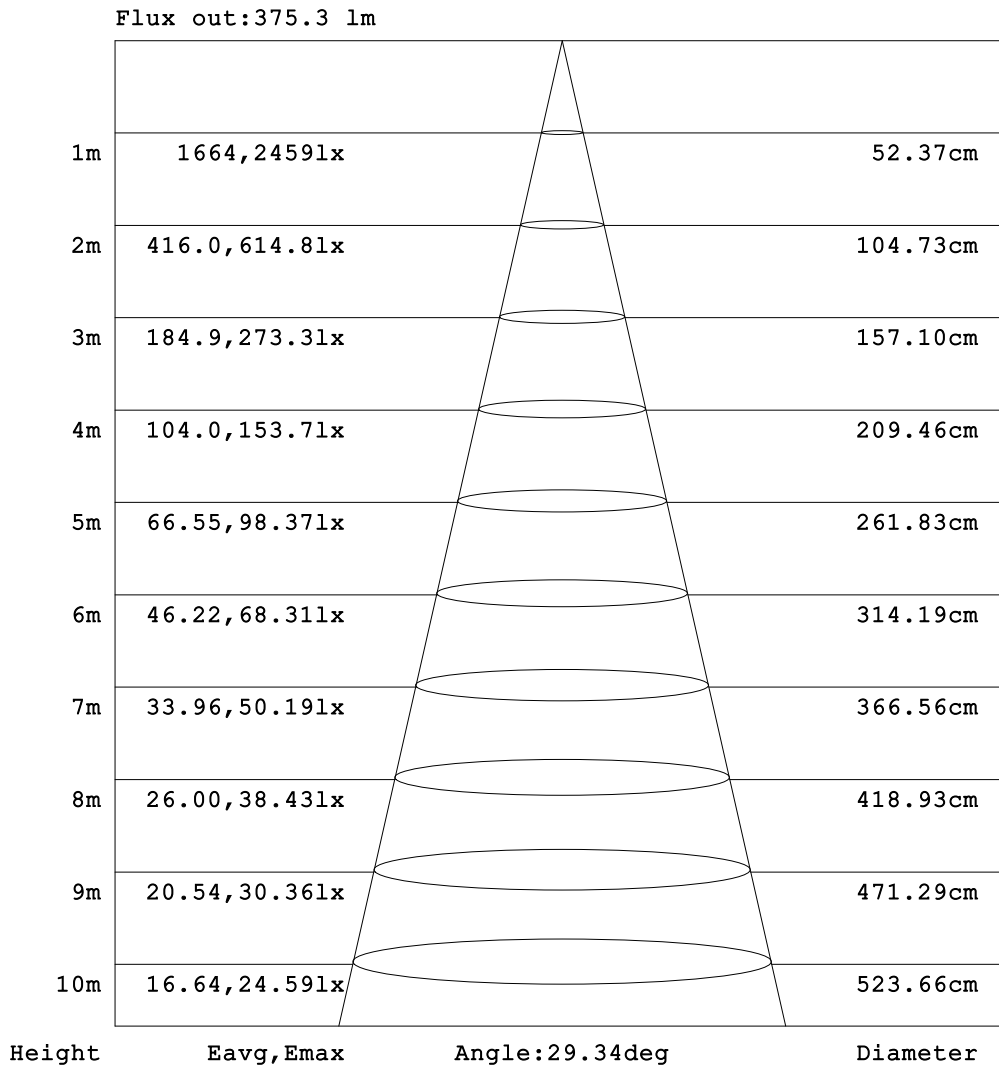


C Range: 0 - 360DEG
 C Interval: 30.0DEG
 Test Speed: HIGH
 Temperature:25.3DEG
 Operators:GS
 Test Date:2025-07-19

γ Range: 0 - 90DEG
 γ Interval: 1.0DEG
 Test System:EVERFINE GO-2000B_V1 SYSTEM V2.00.417
 Humidity:65.0%
 Test Distance:5.600m [K=1.0000]
 Remarks:

AAI Figure

Test:U:219.85V I:0.0951A P:12.765W PF:0.6105 Freq:49.99Hz Lamp Flux:739.031x1 lm		
NAME:	TYPE:	WEIGHT:
SPEC.:	DIM.:	SERIAL No.:
MFR.: EVERFINE	SUR.:	Shielding Angle:



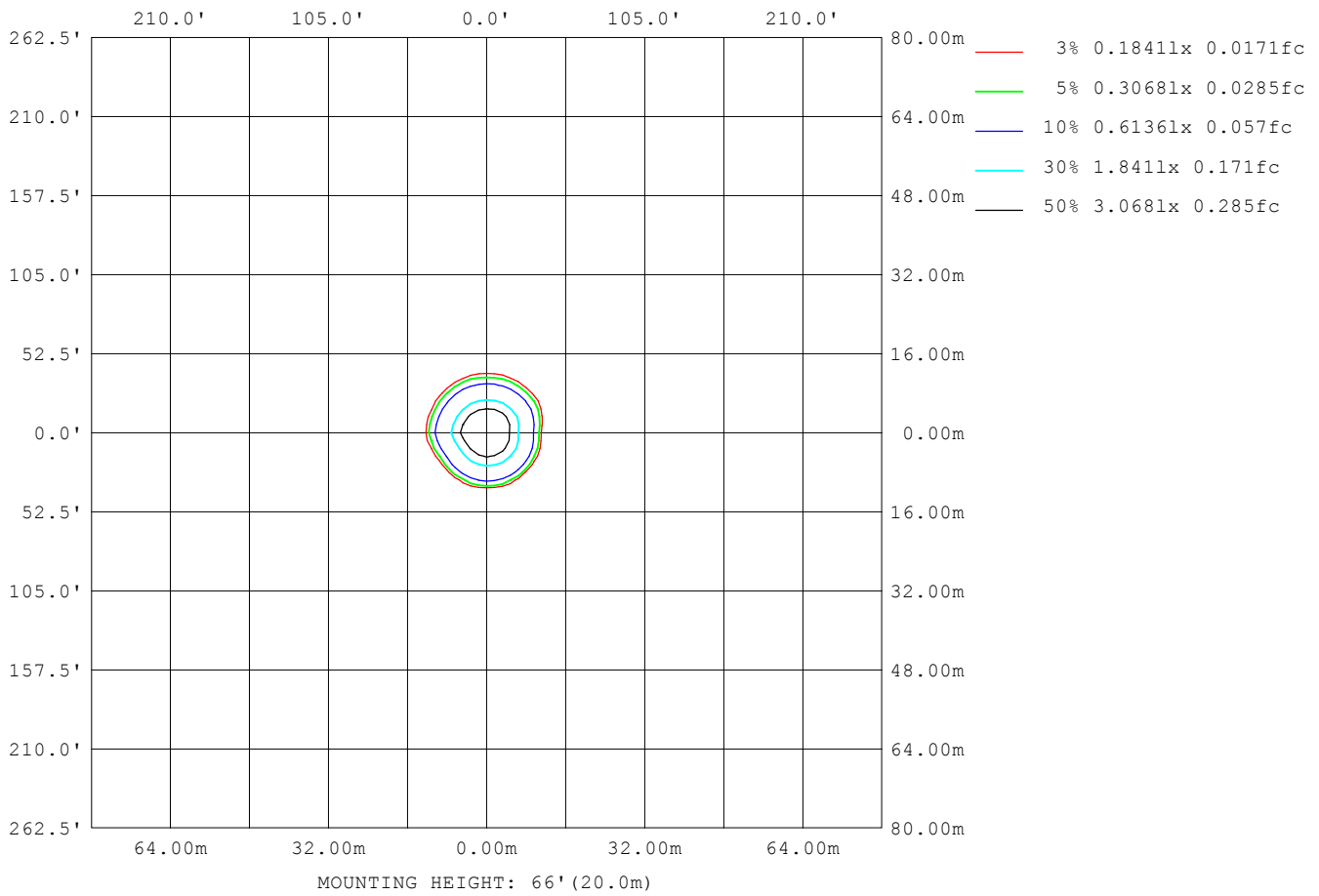
Note:The Curves indicate the illuminated area and the average illumination when the luminaire is at different distance.

C Range: 0 - 360DEG
 C Interval: 30.0DEG
 Test Speed: HIGH
 Temperature:25.3DEG
 Operators:GS
 Test Date:2025-07-19

γ Range: 0 - 90DEG
 γ Interval: 1.0DEG
 Test System:EVERFINE GO-2000B_V1 SYSTEM V2.00.417
 Humidity:65.0%
 Test Distance:5.600m [K=1.0000]
 Remarks:

ISOLUX DIAGRAM

Test:U:219.85V I:0.0951A P:12.765W PF:0.6105 Freq:49.99Hz Lamp Flux:739.031x1 lm		
NAME:	TYPE:	WEIGHT:
SPEC.:	DIM.:	SERIAL No.:
MFR.: EVERFINE	SUR.:	Shielding Angle:



C Range: 0 - 360DEG
 C Interval: 30.0DEG
 Test Speed: HIGH
 Temperature:25.3DEG
 Operators:GS
 Test Date:2025-07-19

γ Range: 0 - 90DEG
 γ Interval: 1.0DEG
 Test System:EVERFINE GO-2000B_V1 SYSTEM V2.00.417
 Humidity:65.0%
 Test Distance:5.600m [K=1.0000]
 Remarks:

LED Avg.L Report

Test:U:219.85V I:0.0951A P:12.765W PF:0.6105 Freq:49.99Hz Lamp Flux:739.031x1 lm		
NAME:	TYPE:	WEIGHT:
SPEC.:	DIM.:	SERIAL No.:
MFR.: EVERFINE	SUR.:	Shielding Angle:

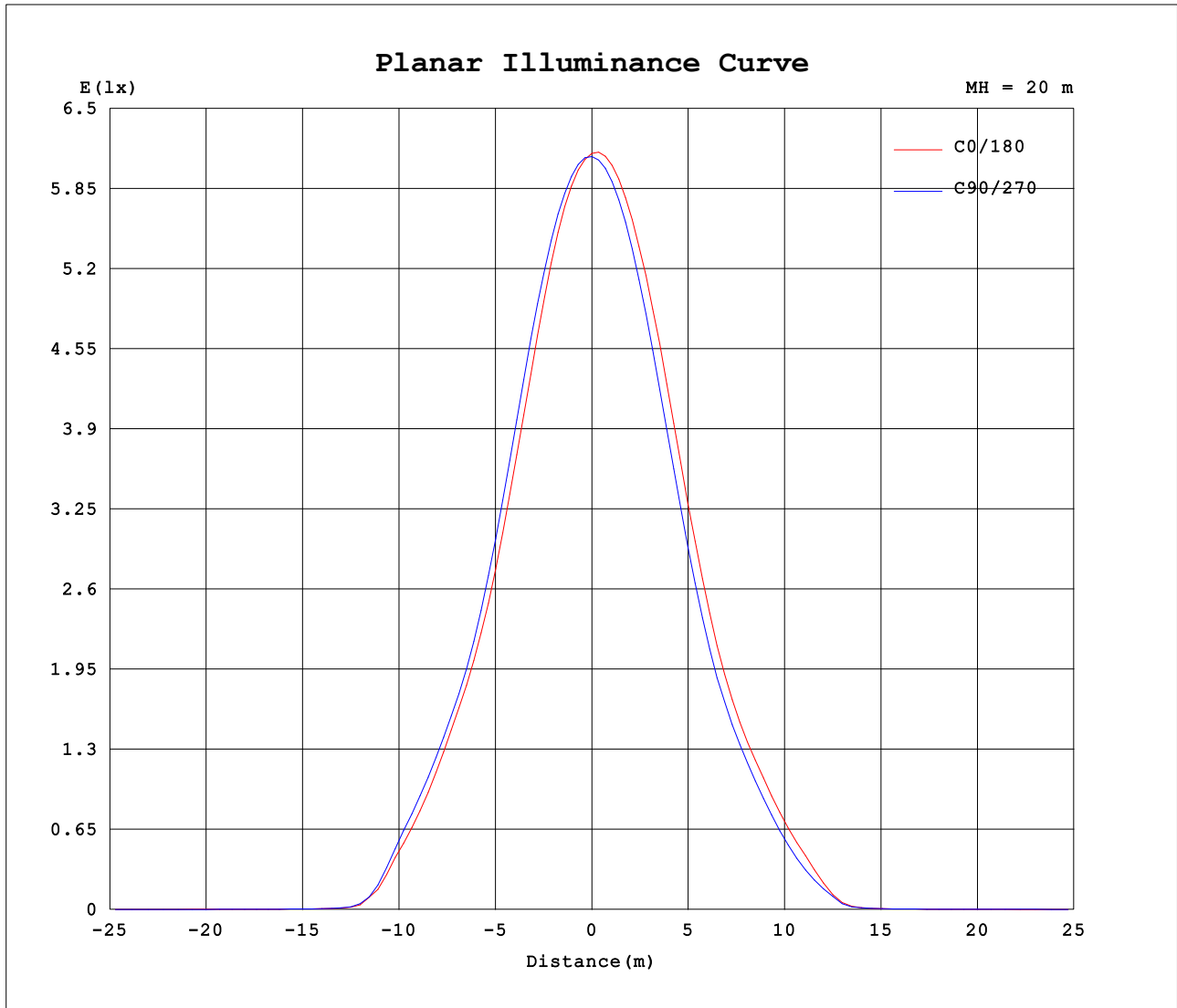
AvgL	cd/m2
L_0~180 (65) av	4438
L_0~180 (75) av	3796
L_0~180 (85) av	5468
L_90~270 (65) av	4541
L_90~270 (75) av	3889
L_90~270 (85) av	6056
L_45 (65) av	4496
L_45 (75) av	3871
L_45 (85) av	5744

Standard: GB/T 29293-2012

C Range: 0 - 360DEG
 C Interval: 30.0DEG
 Test Speed: HIGH
 Temperature:25.3DEG
 Operators:GS
 Test Date:2025-07-19

γ Range: 0 - 90DEG
 γ Interval: 1.0DEG
 Test System:EVERFINE GO-2000B_V1 SYSTEM V2.00.417
 Humidity:65.0%
 Test Distance:5.600m [K=1.0000]
 Remarks:

Planar Illuminance Curve



C Range: 0 - 360DEG
 C Interval: 30.0DEG
 Test Speed: HIGH
 Temperature: 25.3DEG
 Operators: GS
 Test Date: 2025-07-19

γ Range: 0 - 90DEG
 γ Interval: 1.0DEG
 Test System: EVERFINE GO-2000B_V1 SYSTEM V2.00.417
 Humidity: 65.0%
 Test Distance: 5.600m [K=1.0000]
 Remarks:

